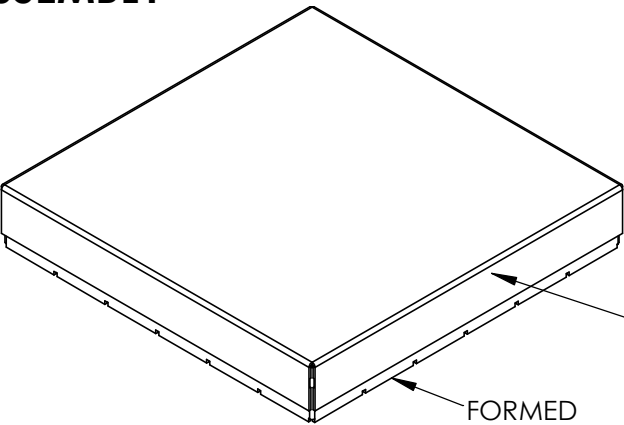
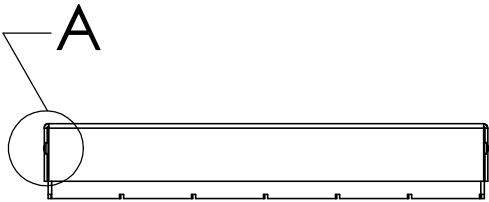


ASSEMBLY

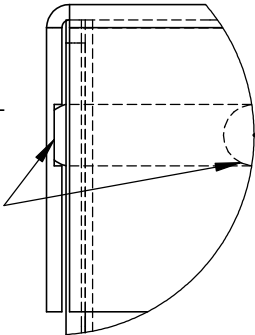


FORMED  
EZ-LOC FENCE  
GRVF-0250SC-012000



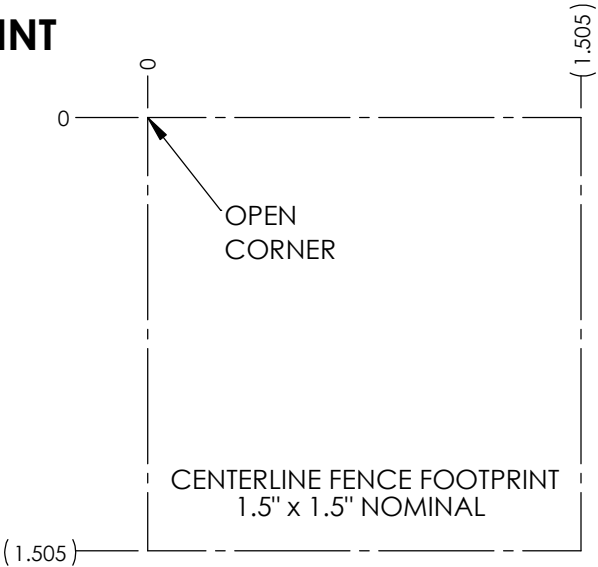
EZ-LOC COVER  
GRVC-1500S1500-0200X

DETAIL A  
SCALE 8 : 1

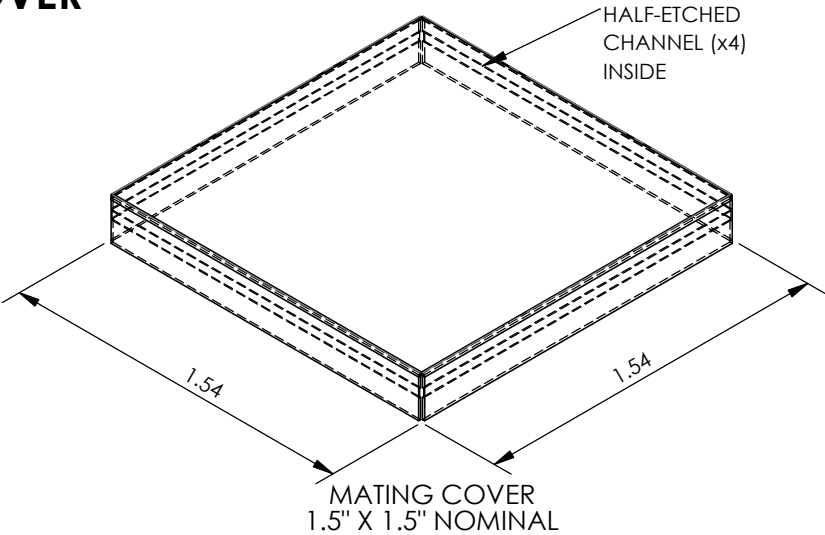


ETCHED CHANNEL  
INSIDE COVER  
ENGAGES FENCE  
DIMPLE ARRAY

FOOTPRINT



COVER



BOM	PART NO.
ASSY	GRVA-1500S1500-0250X
COVER	GRVC-1500S1500-0200X
FENCE	GRVF-0250SC-012000

FOR ANY QUESTIONS ON NON-STANDARD GEOMETRY OPTIONS, PLEASE CONSULT THE FACTORY AT **SALES@ORBEL.COM**

RoHS Compliant

THIRD ANGLE PROJECTION

DO NOT SCALE DRAWING

PROPRIETARY AND CONFIDENTIAL

THE INFORMATION CONTAINED IN THIS DRAWING IS THE SOLE PROPERTY OF ORBEL CORPORATION. ANY REPRODUCTION IN PART OR AS A WHOLE WITHOUT THE WRITTEN PERMISSION OF ORBEL CORPORATION IS PROHIBITED.

DIMENSIONS ARE IN INCHES  
TOLERANCES:  
FRACTIONAL ±  
ANGULAR: MACH ± 3 Degrees  
TWO PLACE DECIMAL ± .010  
THREE PLACE DECIMAL ± .005  
MATERIAL:  
.010" C770 NiAg, 1/2 HARD  
HEAT TREAT:  
FINISH:

	NAME	DATE
DRAWN	TNC	7/22/2025
CREATED		
CHECKED		
APPRVD.		
LATEST REVISION:		
CUSTOMER:		

ORBEL

EZ-LOC  
STANDARD ASSEMBLY

SIZE A

SAMPLE DRAWING

SCALE: 3:2

CAGE CODE: 57DU2

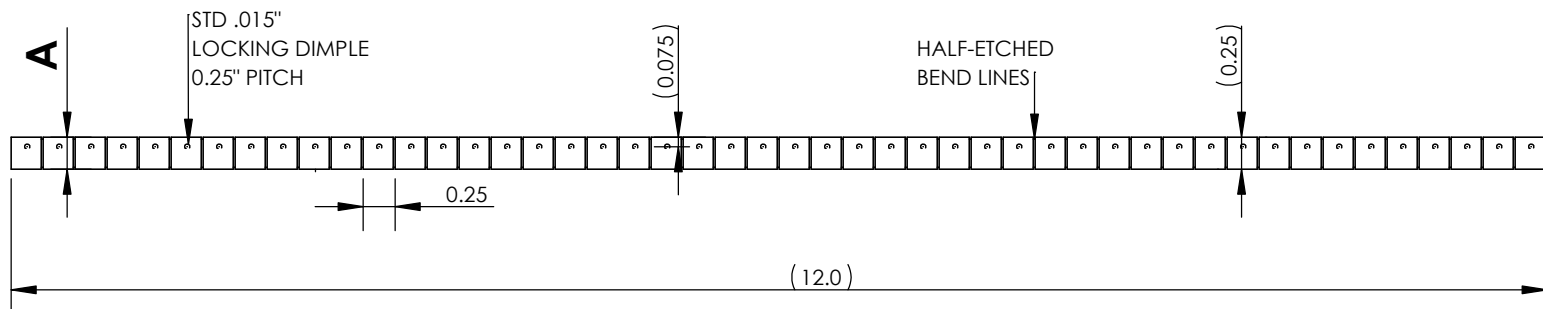
SHEET 1 OF 2

# FENCE STRIP

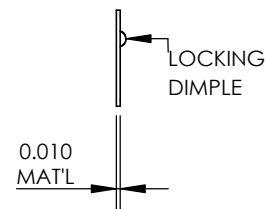
(SURFACE MOUNT)

GRVF-0250SC-012000

DIM "A"	PART NO.
0.25"	GRVF-0250SC-012000
0.50"	GRVF-0500SC-012000
1.00"	GRVF-1000SC-012000



SIDE VIEW  
SCALE 2 : 1

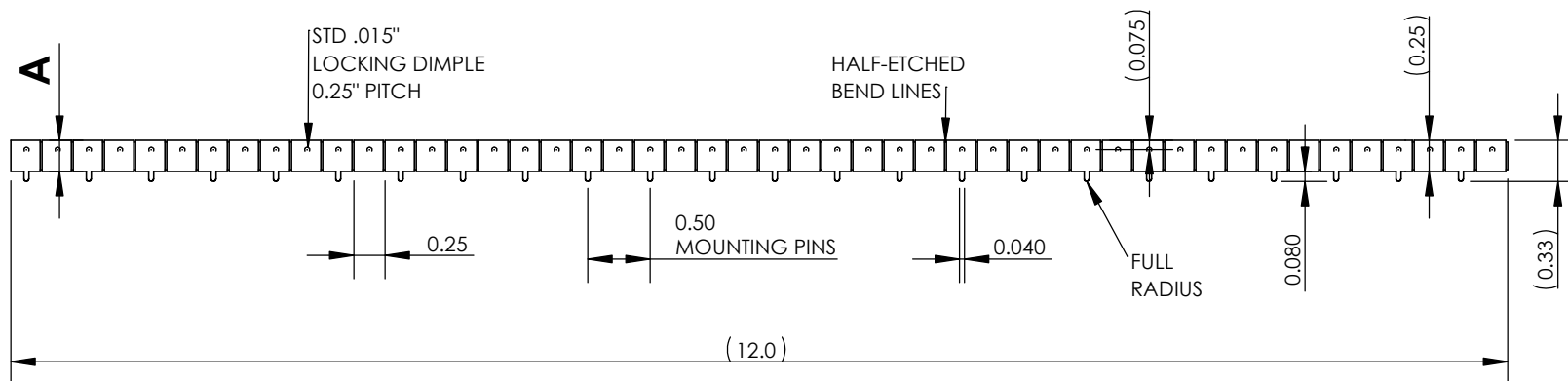


# FENCE STRIP

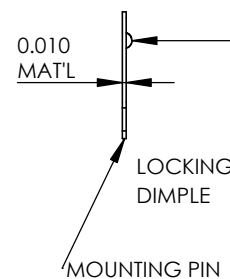
(THROUGH-HOLE PINS)

GRVF-0250TB-012000

DIM "A"	PART NO.
0.25"	GRVF-0250TB-012000
0.50"	GRVF-0500TB-012000
1.00"	GRVF-1000TB-012000

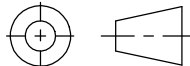


SIDE VIEW  
SCALE 2 : 1



RoHS Compliant

THIRD  
ANGLE  
PROJECTION



DO NOT SCALE DRAWING

**PROPRIETARY AND CONFIDENTIAL**

THE INFORMATION CONTAINED IN THIS DRAWING IS THE SOLE PROPERTY OF ORBEL CORPORATION. ANY REPRODUCTION IN PART OR AS A WHOLE WITHOUT THE WRITTEN PERMISSION OF ORBEL CORPORATION IS PROHIBITED.

DIMENSIONS ARE IN INCHES  
TOLERANCES:  
FRACTIONAL ±  
ANGULAR: MACH ± 3 Degrees  
TWO PLACE DECIMAL ± .010  
THREE PLACE DECIMAL ± .005

MATERIAL:  
.010" C770 NiAg, 1/2 HARD  
HEAT TREAT:  
FINISH:

	NAME	DATE
DRAWN	TNC	7/22/2025
CREATED		
CHECKED		
APPRVD.		
LATEST REVISION:		
CUSTOMER:		

**ORBEL**

EZ-LOC  
STANDARD ASSEMBLY

SIZE	A	SAMPLE DRAWING
SCALE: 2:3	CAGE CODE: 57DU2	SHEET 2 OF 2

FOR ANY QUESTIONS ON NON-STANDARD GEOMETRY OPTIONS, PLEASE CONSULT THE FACTORY AT **SALES@ORBEL.COM**